

**PRODUCT CATALOGUE**

# **CPM BOOSTER CENTRIFUGAL PUMP**



*The*  
**WATER & SOLAR COMPANY**  
WATER & ENERGY SYSTEMS

# **SINGLE STAGE PUMPS**

## **CPM**

### **Range of Performance**

**Flow Rate: Max 164 L/min (9.8m<sup>3</sup>/h)**

**Head: Max 42m**

### **Limits of Use**

**Suction lift: Max 7 m**

**Liquid temperature: 40 Degrees**

**Environmental temperature: 40 Degrees**

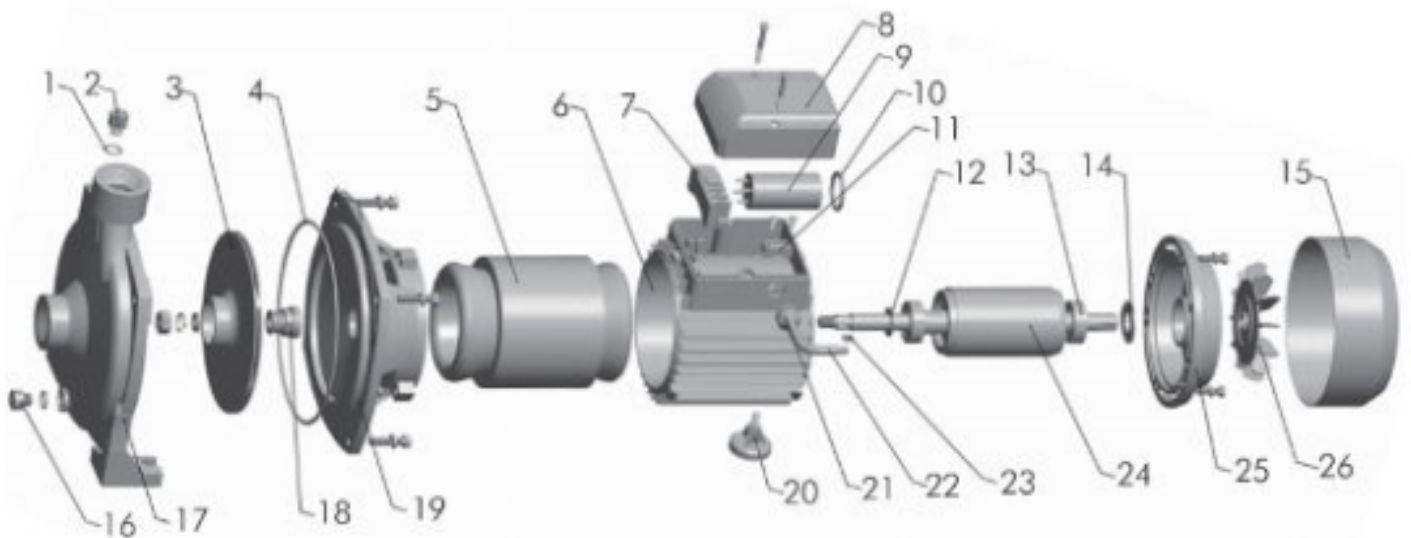
### **Uses and Installations**

**This pump is suitable for pumping clean water free of abrasive particles and non-aggressive liquids towards the pump's materials. Known for their reliability, ease of use, and cost-effectiveness, they are ideal for household applications, especially in irrigation and pressure boosting systems. For safety, the pump should be installed under a ventilated cover and shielded from rain or water splashes.**

# Construction Characteristics

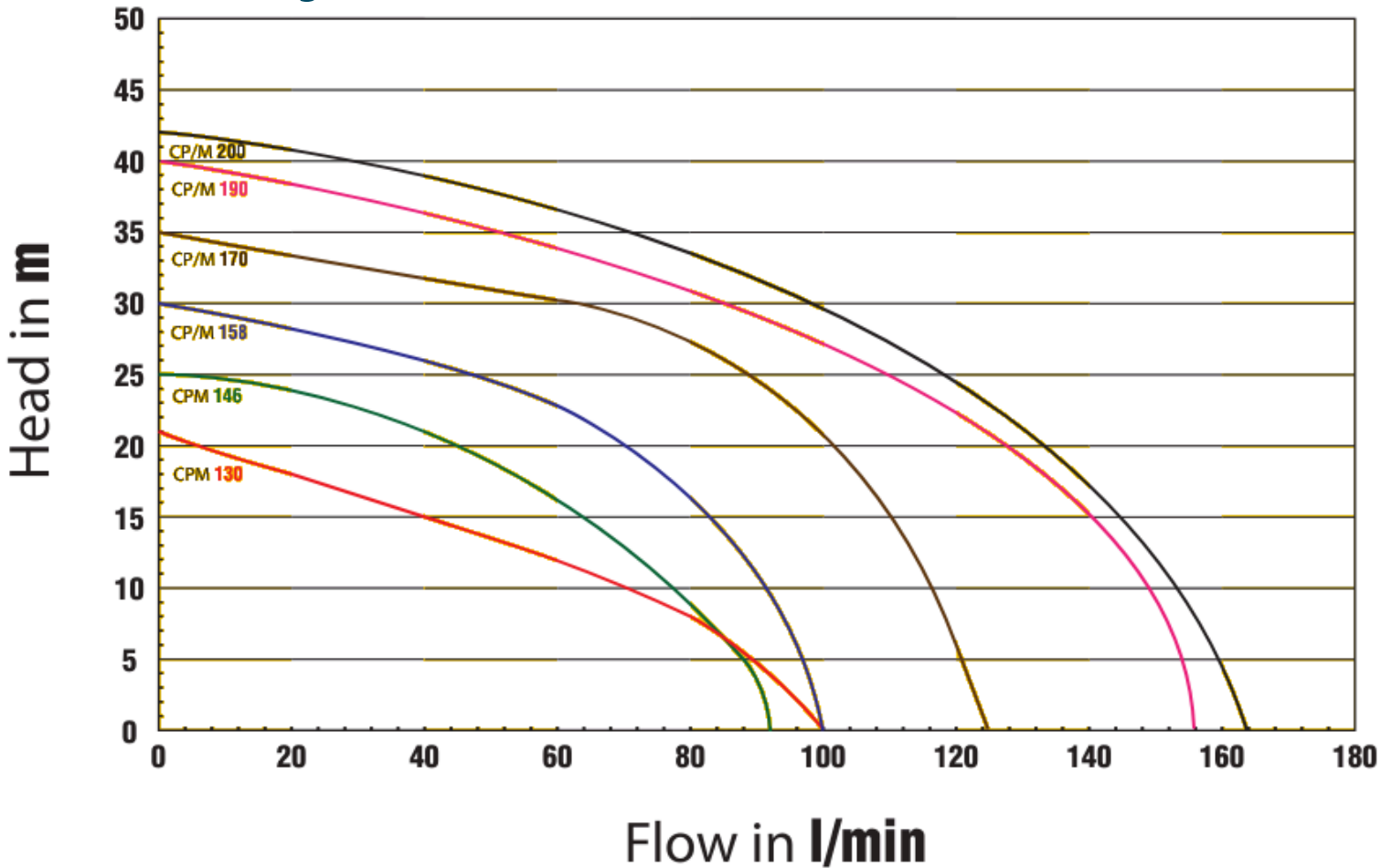
**Pump Body:** Cast Iron  
**Impellers:** Brass  
**Motor Shaft:** Stainless Steel 304  
**Mechanical Seal:** Ceramic-graphite  
**Electric Motor:** Single-phase 230V - 50Hz with capacitor and thermal overload protector.  
**CP:** Three-phase 380/400v -50Hz  
**Insulation:** Class B  
**Protection:** IP 44

## Diagram



No.	Description	No.	Description	No.	Description	No.	Description
1	O-Ring	7	Terminal board	14	Wave spring	21	Cable protector
2	Brass air vent screw	8	Capacitor cover	15	Fan cover	22	Cable
3	Impeller	9	Capacitor	16	Water vent screw	23	Key
4	O-Ring	10	O-Ring	17	Pump Body	24	Rotor
5	Stator	11	Cable Fixer	18	Mechanical Seal	25	End Cover
6	Motor bracket	12	Water proof ring	19	Coupling	26	Fan
		13	Bearing	20	Foot		

# Hydraulic Performance Curve



## Technical Data

NO	MODE	POWER		Q (m <sup>3</sup> /h)	0	0.6	1.2	1.8	2.4	3	3.6	4.8	6	7.2
	1ph / 3ph	kW	HP	Q (l/min)	0	10	20	30	40	50	60	80	100	120
1	CPM130	0.37	0.5	H (m)	21	19.4	18	16.4	15	13.5	11.9	8	0	
2	CPM146	0.55	0.75		25	24.7	23.9	22.6	21	18.8	16.1	8.9		
3	CP/M158	0.75	1		30	29.1	28.2	27.1	26	24.5	22.8	16.2	0	
4	CP/M170	1.1	1.5		35	34.1	33.3	32.6	31.8	31	30.2	27.3	20.8	6
5	CP/M190	1.5	2.2		40	39	38.1	37.1	36	35	33.8	31.3	27.2	22.2
6	CP/M200	2.2	3		42	41.7	40.9	40	38.9	37.6	36.1	33	29.4	24

## Dimension

No	Model	Freq.	Suct. Max	Size	Start-up Amps (1ph)	Running Amps (1ph)	Dimension	N/W
	1ph / 3ph	Hz	m	inch	A	A	L x W x H mm	kg
1	CPM130	50	8	1" X 1"	9	2.8	285x185x230	9
2	CPM146	50	8	1" X 1"	14	4.2	340x210x265	12
3	CPM158	50	8	1" X 1"	19	5.8	340x210x265	13
4	CPM170	50	8	1¼" X 1"	23	7.8	390x240x290	19
5	CPM190	50	8	1¼" X 1"	30.5	10	390x260x320	23
6	CPM200	50	8	1¼" X 1"	33	10.6	455x280x340	30.5



**+27 62 375 5088**



**+27 65 321 5803**



**<https://www.thewatersolarcompany.co.za/>**



**<https://maps.app.goo.gl/MBR2LMW3T6f9TtHV9>**



**<https://www.facebook.com/watersolarcompany>**



**<https://www.youtube.com/@TheWaterSolarCompany/>**



**<https://www.instagram.com/watersolarcompany2023/>**