



# 4 INCH BOREHOLE PUMP MOTOR



**PRODUCT  
CATALOGUE**

# **VEGA 4 INCH BOREHOLE PUMP MOTOR (380V)**

**The Vega 4 Inch Borehole Pump Motor (380V) is a high-quality motor designed for efficient operation in borehole pump systems. Manufactured according to the NEMA standard, this motor can be used on various borehole pump brands that adhere to the same specifications, ensuring compatibility and versatility**

**Available in single-phase, three-phase, and specifically for solar applications, the 220V three-phase model, this motor caters to different power requirements for solar borehole pump applications. It is constructed with oil cooling capabilities, contributing to its durability and reliable performance.**

**With a remarkable ability to withstand submersion depths of up to 20 bar, this pump motor ensures efficient operation even in challenging conditions.**

# 4" OIL FILLED MOTOR

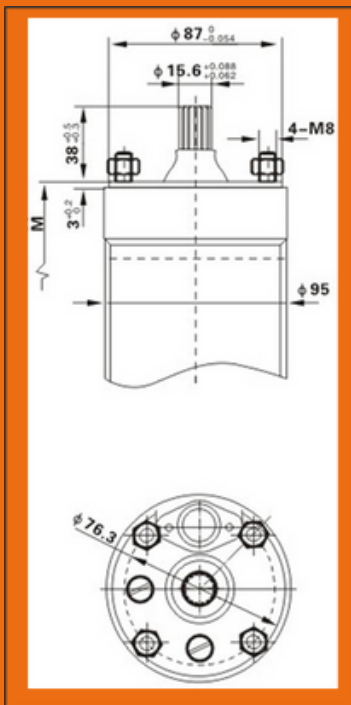
## 20 Bar Single Phase

### Motor Technical Data

Single phase power:	0.37 to 2.2 kW
Speed:	2850 rpm
Voltage:	220 ~ 240V/50Hz
Insulation class:	B
Protection grade:	IP 68
Highest temperature of Liquid:	35oC
Maximum solid handling:	40g/m3
Motor casing:	stainless steel
Maximum diameter:	Φ 95 mm

With sand proof cover/pressure balance membrane/mechanical seal for high performance. Flange and coupling according to NEMA standard.

### Motor Dimensions



TYPE	MOTOR POWER		CAP μf	RUNNING Amps	DIMENSIONS	
	kW	HP			Length (mm)	Weight (kg)
Single Phase 220V~/50HZ						
4SDm-0.37	0.37	0.5	20	3.7	314	6.7
4SDm-0.55	0.55	0.75	25	4.7	329	7.3
4SDm-0.75	0.75	1.0	35	6.2	344	8.0
4SDm-1.1	1.1	1.5	45	8.0	399	10.6
4SDm-1.5	1.5	2.0	55	10.5	424	11.7
4SDm-2.2	2.2	3.0	60	15	502	15.7

### Motor Wiring

- Wiring diagram of motor

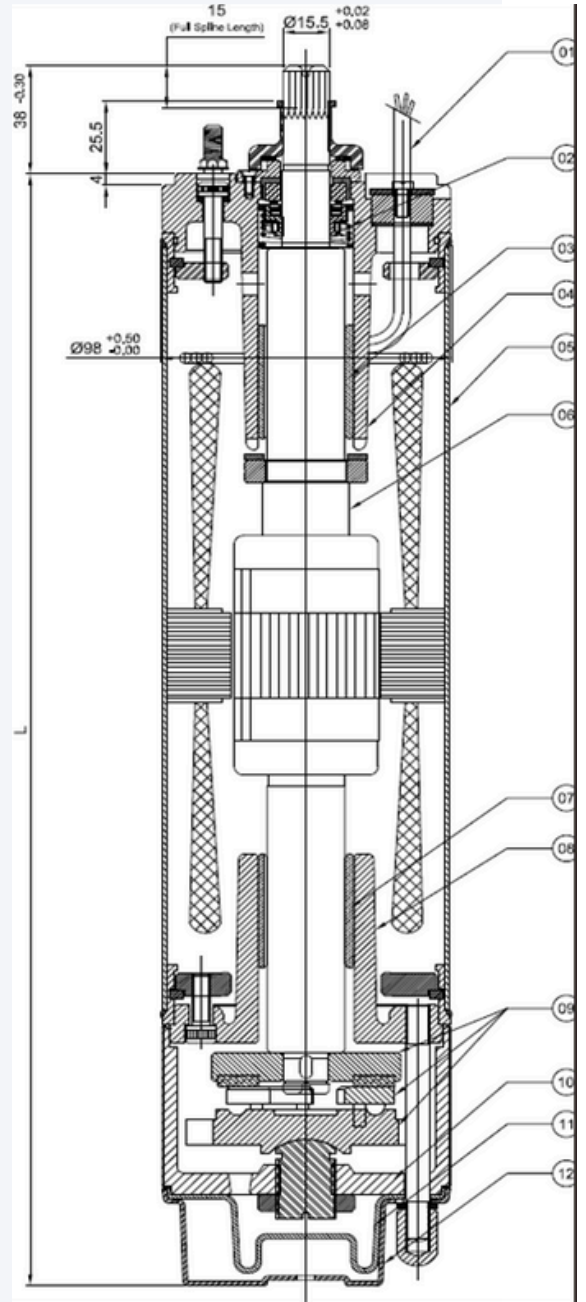


- Each single phase three wires motor should equip a control box

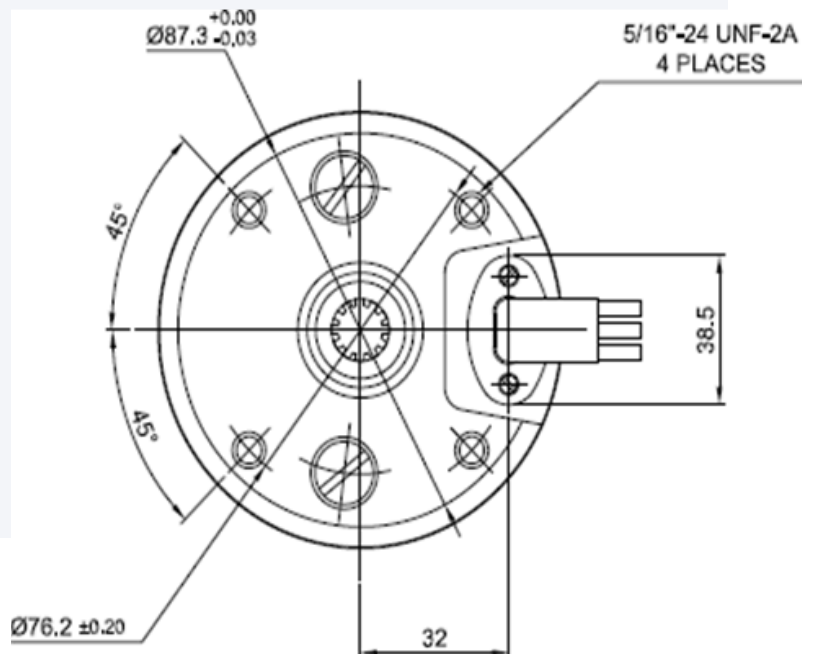
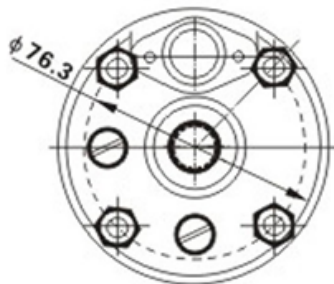
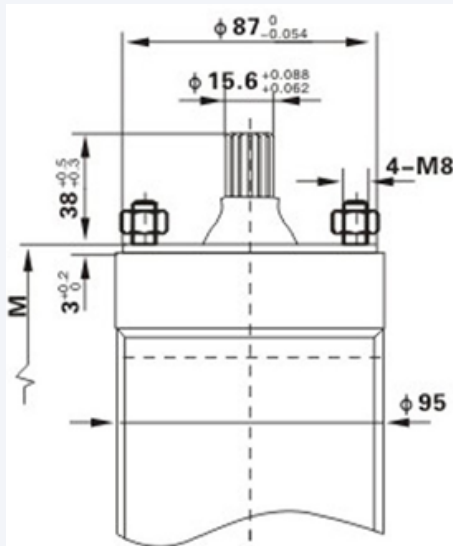
# TECHNICAL DATA

## Motor Parts

SERIAL NO.	PART NAME	MATERIAL
01	Cable 3 Core/ 4 Core	EPR
02	Mechanical Seal	Ceramic/Carbon
03	Bearing Bush	Carbon
04	Upper Housing	CI (FG-200)/S.S.304
05	Motor Pipe	Stainless Steel
06	Rotor shaft	S.S.420
07	Bearing Bush	Carbon
08	Lower Housing	CI (FG-200)
09	Thrust Bearing set	Carbon/S.S. 420
10	Lower Part- 2	CI (FG-200)
11	Pressure Cup	N.B.R.
12	Motor Base	S.S.304
13	All Hardware	S.S.316



## Dimensional Drawings





**+27 62 375 5088**



**+27 65 321 5803**



**<https://www.thewatersolarcompany.co.za/>**



**<https://maps.app.goo.gl/MBR2LMW3T6f9TtHV9>**



**<https://www.facebook.com/watersolarcompany>**



**<https://www.youtube.com/@TheWaterSolarCompany/>**



**<https://www.instagram.com/watersolarcompany2023/>**